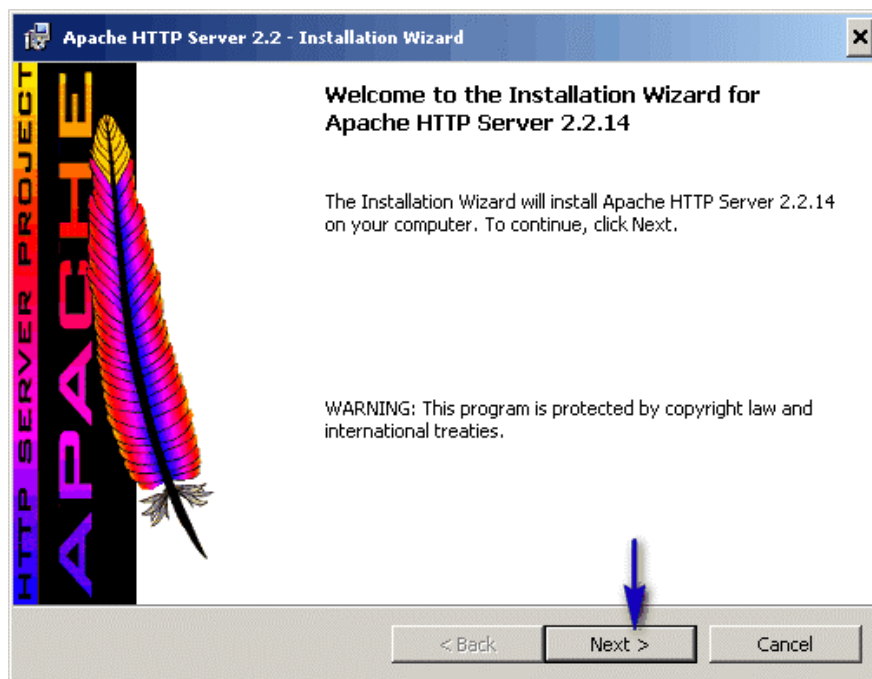


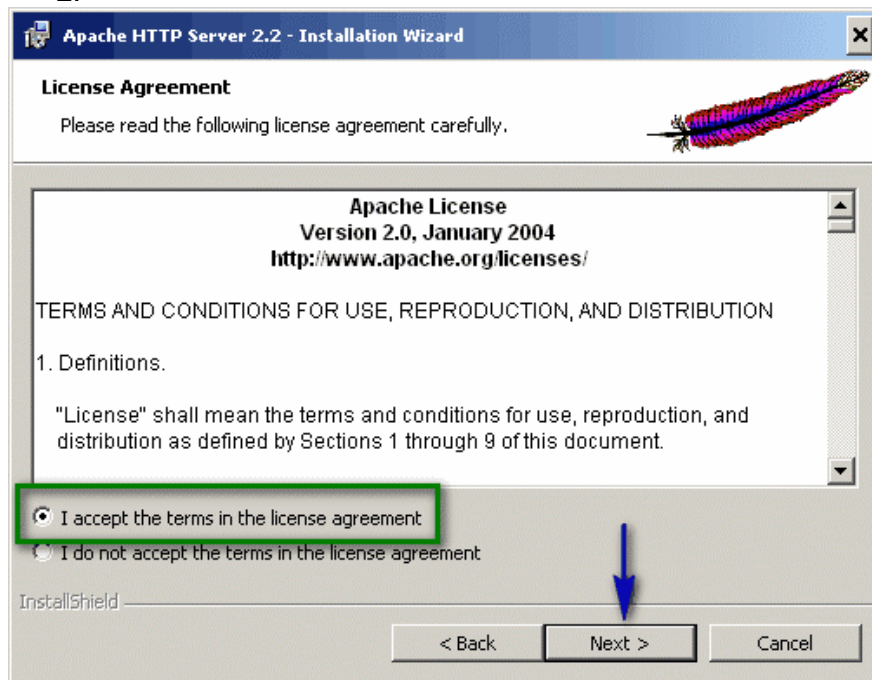
## Installing Apache

I have tried to make installation as easy as possible. Most everything is captured in the screenshots with a few exceptions.

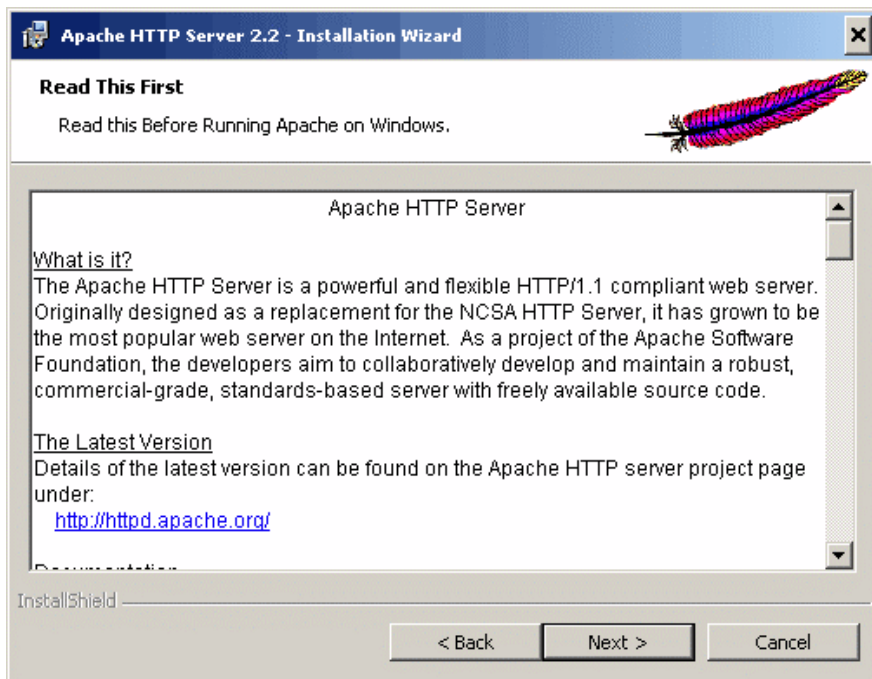
1.



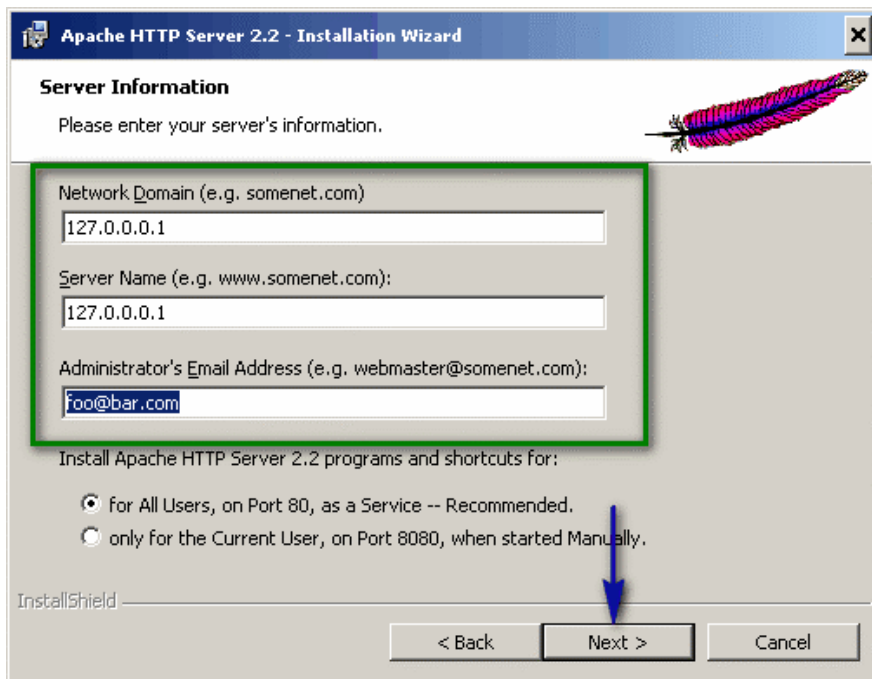
2.



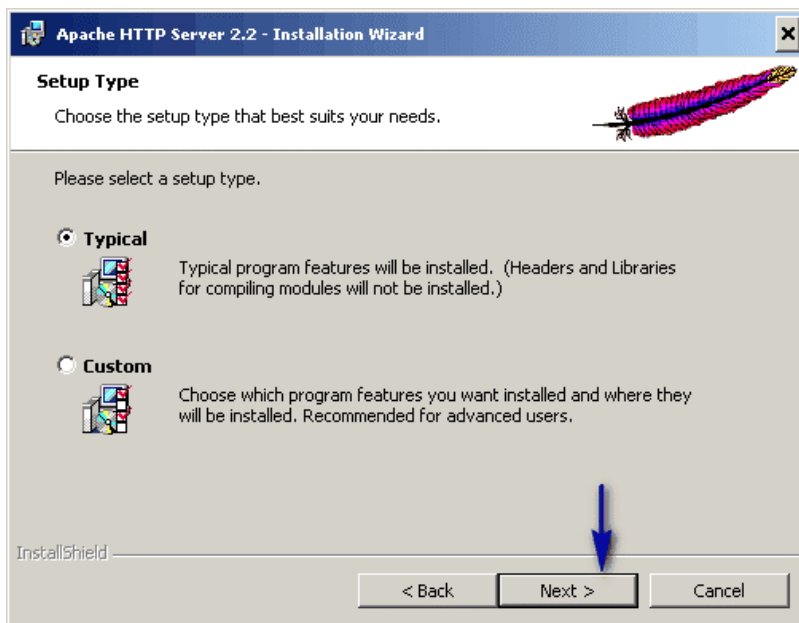
3.



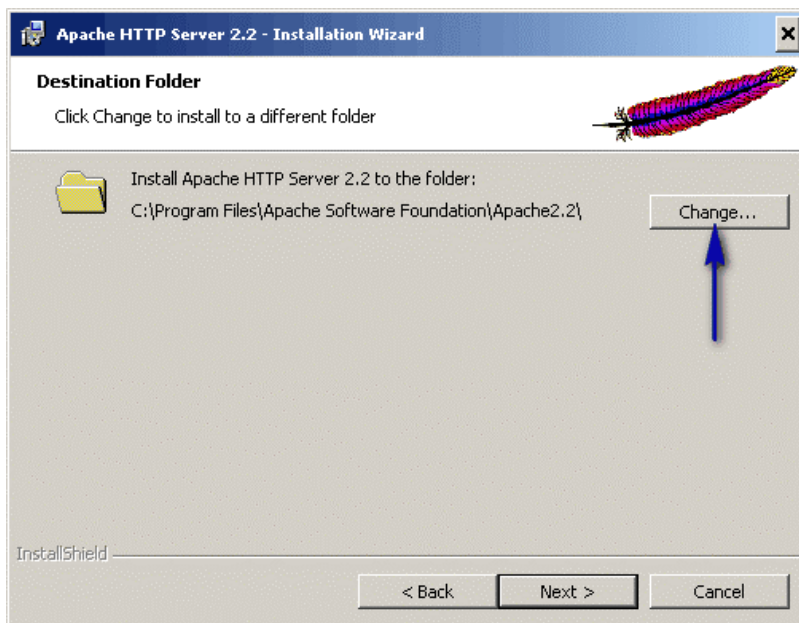
4.



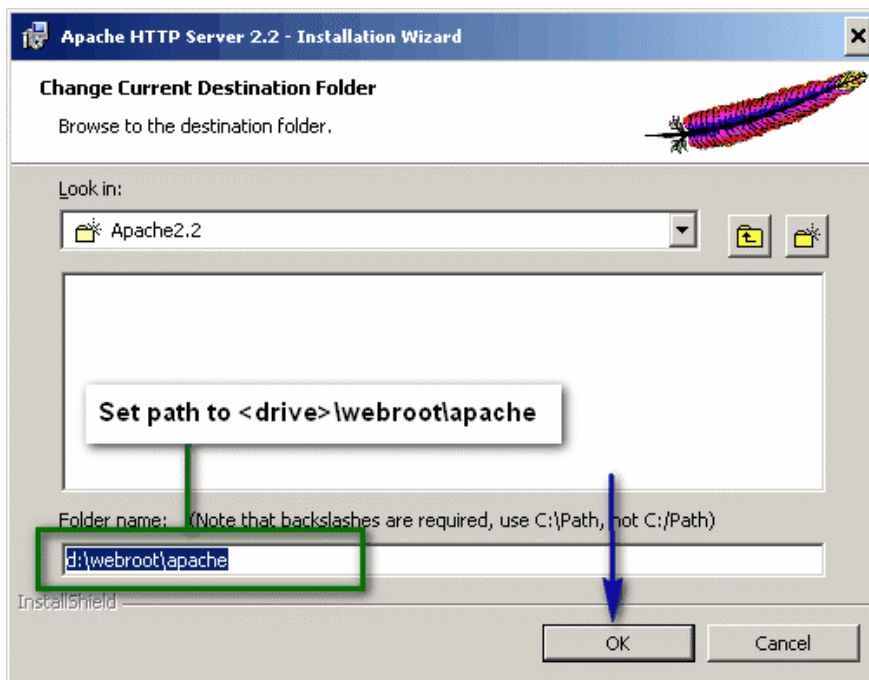
5.



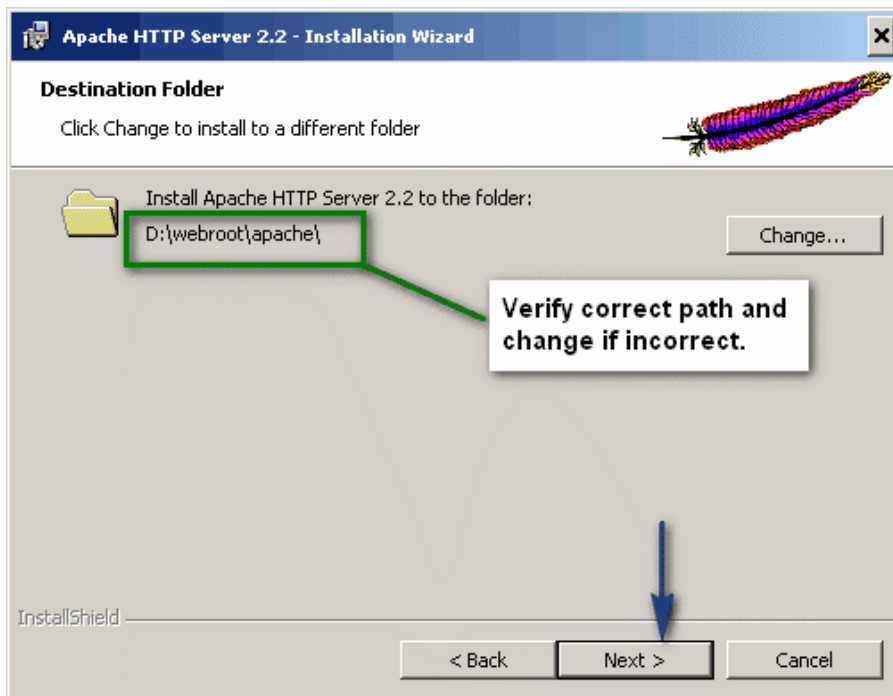
6.



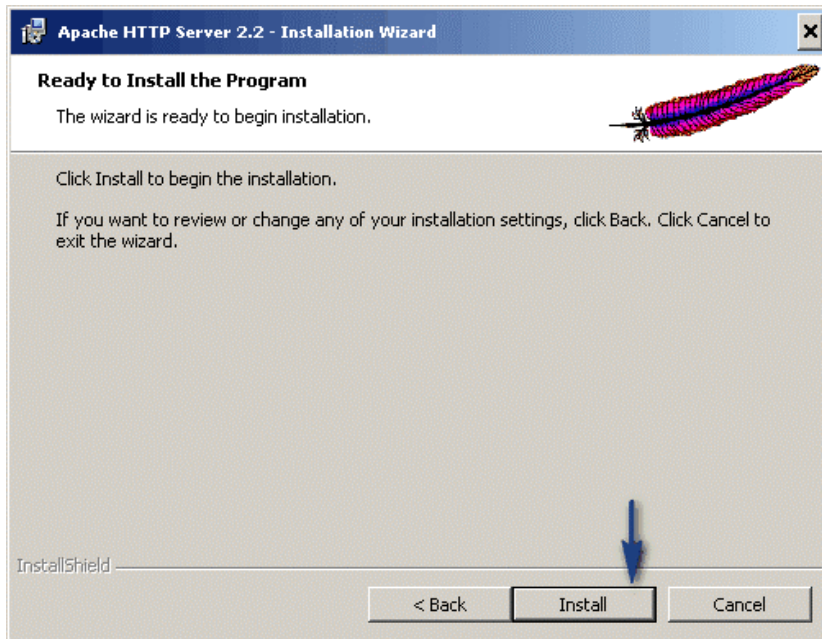
7. Note: You will need to first create the directory named webroot.



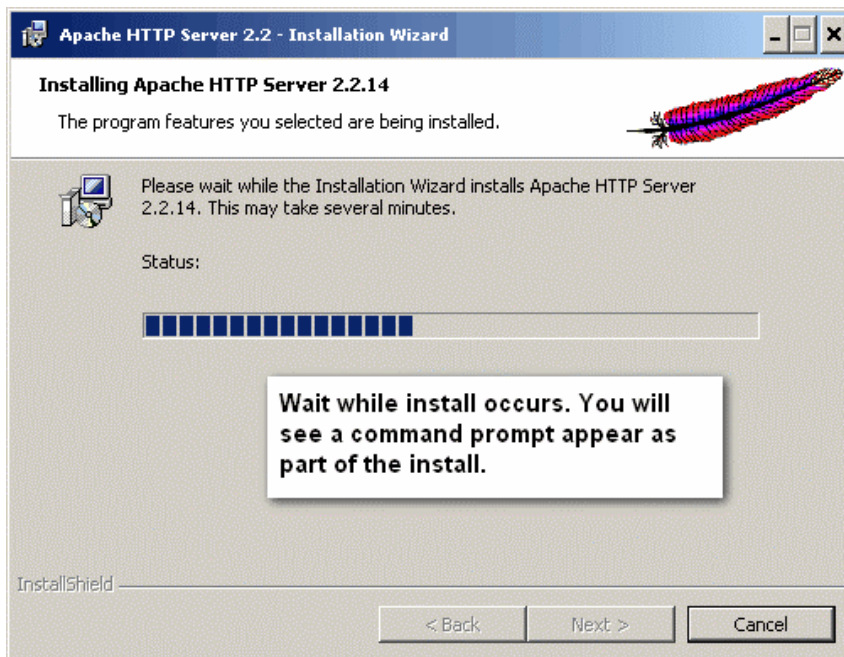
8.



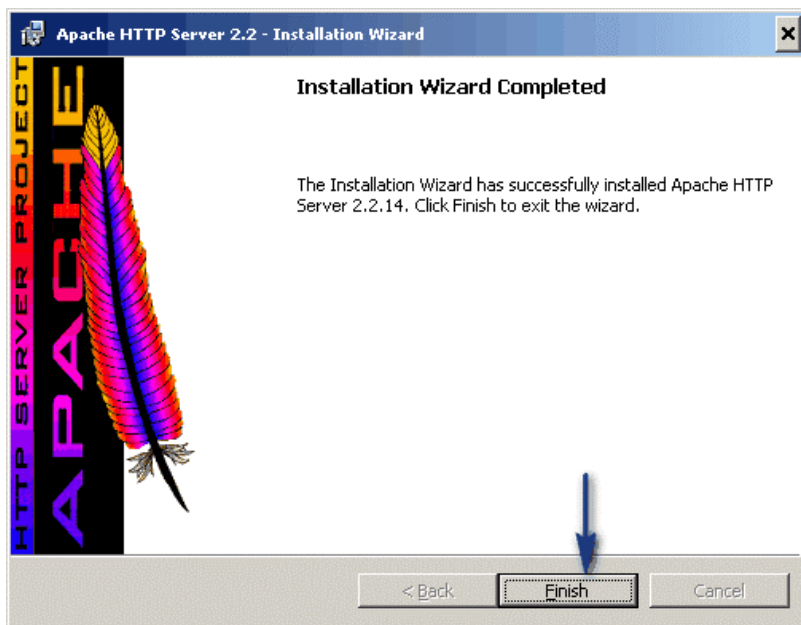
9.



10.



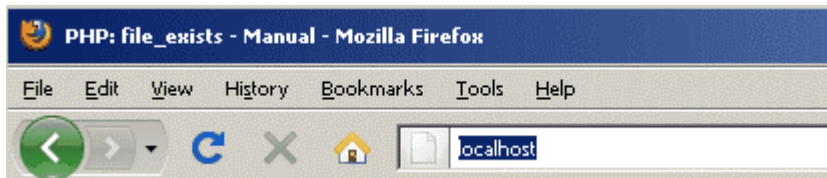
11.



12. Verify that you see Apache in the system tray. This means a windows service was created. The light inside the feather should be green, meaning Apache is running.



13. Perform a very simple test.



14.

